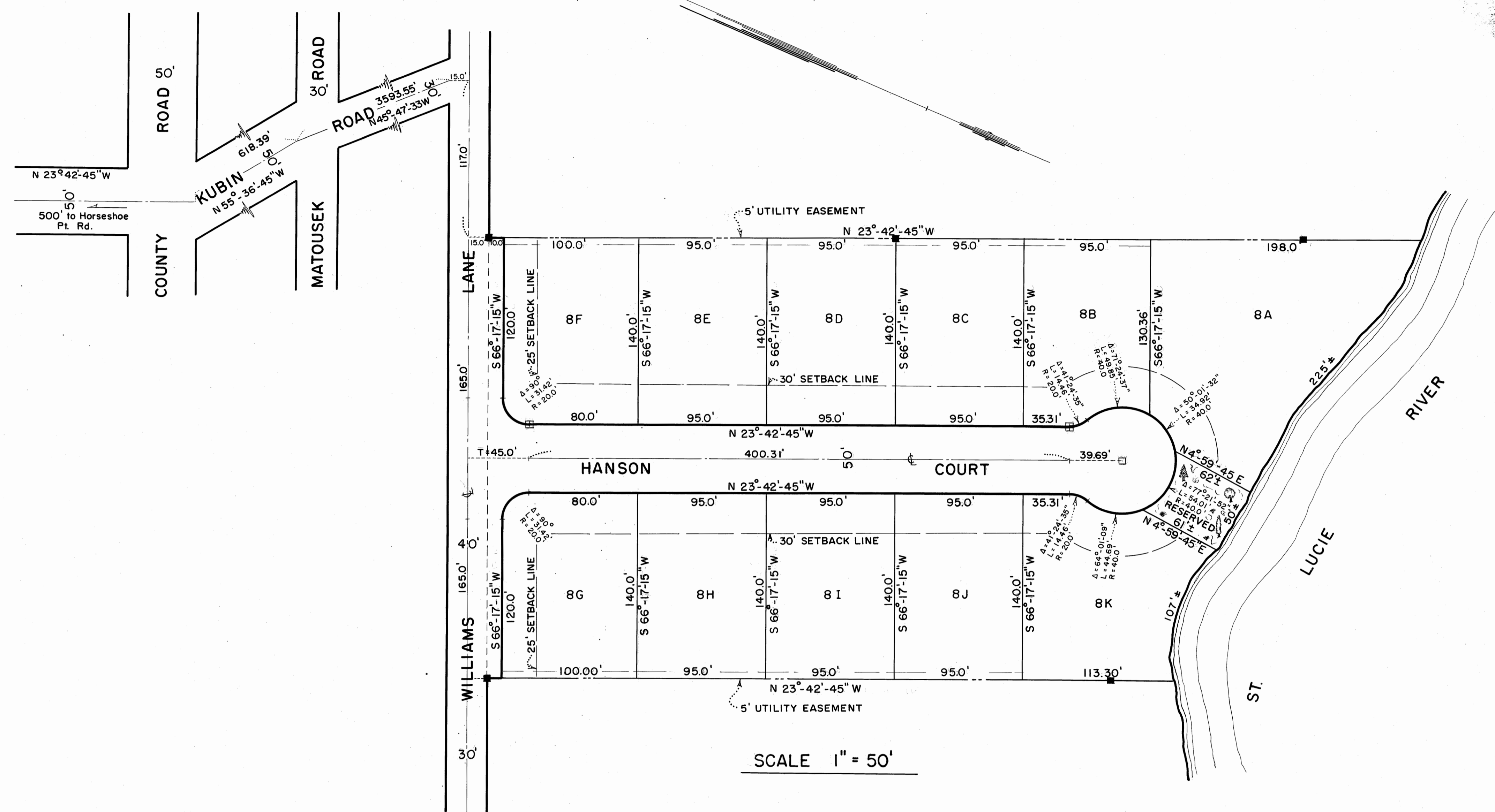


THIS PLAT FILED FOR RECORD AT Stuart,  
 THIS 18<sup>th</sup> DAY OF March A.D., 1957  
 AND RECORDED IN PLAT BOOK 3,  
 PAGE 62 IN THE OFFICE OF THE  
 CLERK OF THE CIRCUIT COURT, MARTIN  
 COUNTY, FLORIDA, at 11:22 a.m.  
 CLERK OF THE CIRCUIT COURT Dorothy Price Clerk  
By Mignon S. Rowe  
 FILE NO. 56401



**DEDICATION**  
 State of Florida S.S.  
 County of Martin

Know all men by these presents:  
 That LAND DEVELOPMENT CORP., a corporation organized and existing under the laws of the State of Florida has caused the attached plat to be made and the land to be subdivided as shown hereon, and does hereby affirm that said corporation is the owner of the land Subdivided and particularly described under the above title caption, and does hereby dedicate, to the perpetual use of the public, the roads shown hereon.  
 In Witness Whereof, LAND DEVELOPMENT CORP. has caused these presents to be signed by its President and its corporate seal to be affixed and attested by its Secretary, this 21st day of Feb., A.D., 19 57

SIGNED John I. Blauvelt President  
 ATTEST Sol Kurlander Secretary

**ACKNOWLEDGEMENT**  
 State of New Jersey S.S.  
 County of Passaic

Before me this day personally appeared John I. Blauvelt and Sol Kurlander, President and Secretary, respectively, of LAND DEVELOPMENT CORP., and acknowledged that they executed the dedication, hereon shown, for the uses and purposes therein stated, on behalf of the said corporation.  
 Witness my hand and official seal  
 at LITTLE FALLS, N.J.  
 this 21st day of February A.D., 19 57

William V. Seale  
 NOTARY PUBLIC  
 AUG. 3, 1958  
 MY COMMISSION EXPIRES

**THIRD MAP  
 OF  
 ROCKY POINT ESTATES**

ROCKY POINT, MARTIN COUNTY, FLORIDA  
 A SUBDIVISION OF LOT 8 AS SHOWN ON PLAT OF SUBDIVISION OF LOTS 13 & 14,  
 HANSON GRANT, T 38 S, R 41 & 42 E, FILED JUNE 29, 1910, PLAT BOOK 1, PAGE  
 89, PUBLIC RECORDS OF PALM BEACH COUNTY.

NOTE:  
 □ - Symbol for proposed permanent reference monument.  
 ■ - " " existing " " "  
 Bearings refer to the true meridian  
 Public utilities easement is reserved over the rear five feet (5')  
 of lots where shown.

**CERTIFICATE**  
 State of Florida S.S.  
 County of Martin

I hereby certify that the plat shown hereon is a true and correct representation of a survey made under my direction, and that said survey was accurate, to the best of my knowledge and belief, and that permanent reference monuments were placed as prescribed by law.

James E. Brock  
 REGISTERED LAND SURVEYOR  
 FLORIDA CERTIFICATE NO. 688

Subscribed and sworn to this 18 day of Mar A.D., 19 57 at Stuart, Florida

Mignon S. Rowe  
 NOTARY PUBLIC  
 MY COMMISSION EXPIRES March 4, 1960

**APPROVED**  
 BOARD OF COUNTY COMMISSIONERS

By: Seymour Sidman  
 Chairman

**STAFFORD & BROCK**  
 CIVIL ENGINEERING - SURVEYING  
 STUART, FLORIDA

DATE: Jan. 1957  
 Drawn By: